



**EGYPTIAN GLOBAL LOGISTICS**

**Company Profile 2026**





**THE LARGEST SHIPPING & LOGISTICS SERVICE PROVIDER IN EGYPT**





## Tailored Services for your business - ONE STOP SHOP

EGL is more than just a service provider as we are active players in Logistics, shipping, and Warehousing of container, breakbulk, and project cargo in Egypt and Tunisia.

EGL presents turnkey projects with end-to-end solutions in project management.



# Company Summary

EGL is the largest shipping & logistic service provider in Egypt offering tailored services for your business with innovative solutions to expand your reach and exceed your goals.  
***(ONE STOP SHOP)***

EGL is an Egyptian Shareholding Company SAE established in 1999 with main activities in shipping, Custom Bonded Warehouses, trucking, and project cargo logistics.



# OUR VISION

---

Our Vision Is To Become A Top Integrated Logistics Company In The Region



## MISSION STATEMENT

To provide innovative and sustainable logistics solutions that meet customer needs, contribute to Egypt's economy and social development, and promote environmental responsibility.

# Products & Services





Heavy Lift Transport



Project Logistics



Logistics for sports, business & entertainment events.



Contract Logistics



Air Freight  
Consolidation Services (LCL)



Supply Chain Management



Multimodal Transport



Launch Services



Ship Agency  
Protecting Agency  
Hub Agency  
D/A Management

Husbandry Services  
Bunker Fuels

Depot Services



Maritime & Logistics Training

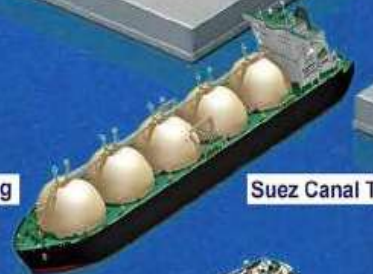


Sea Freight

Ship Spares Logistics



Hull Cleaning



Suez Canal Transit

Rig Moving Operations  
Offshore Support



Tug & Barge Operations



Weather Routing



Cruise & Yacht Services



# Detailed Services



## Container Depots:

1. *Storage of empty and full containers.*
2. *Pre-trip Inspection.*
3. *Container Cleaning.*
4. *Container Repairs and Painting.*
5. *Reefer-PTI Services.*
6. *Fumigation.*
7. *Inland Transportation to Container Terminals.*



## Project Cargo Management:

1. *Door-to-Door services.*
2. *Route Surveys.*
3. *Heavy Cargo Port handling.*
4. *Custom clearance.*
5. *Heavy Cargo Lift & Transport.*
6. *Installation and Technical Services.*
7. *Lashing & Delivery of OOG cargo.*
8. *Chartering Sea & Air Vessels.*
9. *Offshore Marine services.*



## Industry Solution:

- *Petrochemicals.*
- *Power & Renewables Energy.*
- *E-Commerce*
- *Oil & Gas Logistics.*
- *Marine Parts.*
- *Offshore.*
- *Automotive.*
- *Fashion & Retail.*
- *Perishables & Reefers.*
- *Healthcare & Pharma.*
- *Valuable House removals.*



## Warehousing:

1. *Receiving & Cross docking.*
2. *Storage Location management.*
3. *Inventory control.*
4. *Order selection.*
5. *Packing.*
6. *Express & Parcel Delivery.*



## Supply chain solutions:

*EGL offers tailored door-to-door solutions for Air shipments, Full Container Load (FCL), and Less Container Load (LCL) by perfecting the balance between cost and time by adding flexibility to your supply chain.*



## Inland Transportation:

1. *Owns and operates 200 trucks.*
2. *Trucking management.*
3. *Heavy cargo transportation.*
4. *Line Hauling.*



# EGL Shipping Liner Services

EGL Shipping provides comprehensive liner services across global shipping lanes.



# Liner Agency



China United Lines (CUL) offers reliable container shipping services with a strong focus on Asia, Europe, and cross-Pacific routes, ensuring efficient and cost-effective logistics solutions.

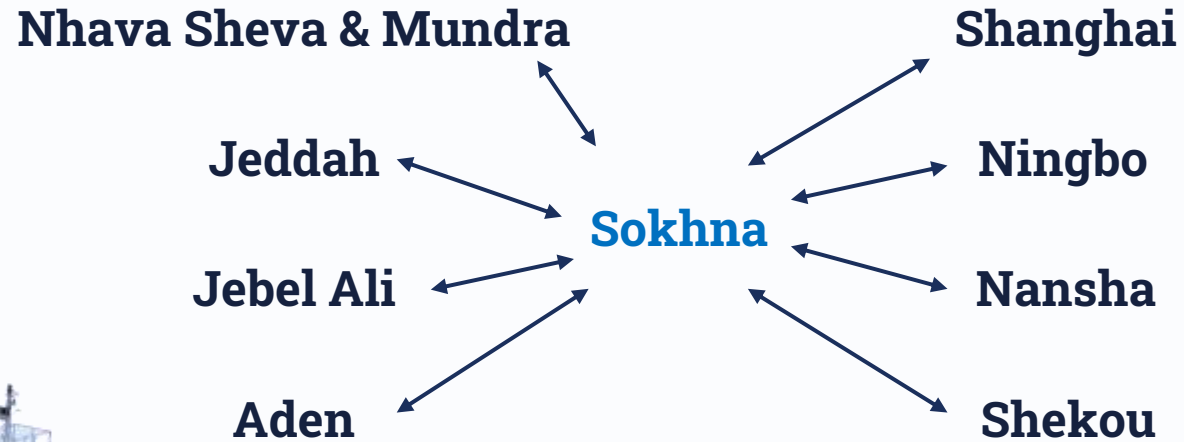
Alpha Shipping delivers streamlined logistics and containerized cargo services, combining advanced technology with a focus on punctuality and reliability across global trade lanes.

Volta Shipping specializes in providing flexible and tailored freight services for regional and international cargo movement, catering to diverse shipping needs with high operational efficiency.

Alligator Shipping Containers Line (ASCL) is a reliable container carrier delivering consistent regional connectivity and cost-efficient liner solutions

# RED SEA SERVICE (Weekly Service)

*Service MAP (As Agents only)*





# MED SERVICE (Weekly Service)

*Service MAP (As Agents only)*

**Damietta**

**St. Peterburg**

**Kaliningrad**

**Dekheila**

**Novorossiysk**

**Alexandria**

**Jeddah**

**Nhava Sheva & Mundra**



# Why EGL



**1,000+**

*Logistics Experts  
serving clients.*



**30**

*Offices in Egypt,  
Tunisia & Libya*



**9**

*Bonded & Non-  
bonded storage  
facilities.*



**450,000**

*SQM of  
warehousing &  
storage.*



**890,420**

*TEUs per year*



**25,600+**

*Air shipments per  
year.*

# Success Stories

- 10,000+ partners.
- WCA Projects Network best Africa Agent twice.
- Heavy Lift -PFI magazine best project video of the year 2020.
- ISO & HSE Certified
- FIATA, IATA, Baltic Exchange, BIMCO & FONASBA.
- Example Major Projects:
  - Benban Solar Plant.
  - Assiut Power plant.
  - Cairo WEST Power Plant.
  - Heavy Rail Transit equipment.
  - Heavy Construction equipment.
  - Heavy Petroleum equipment.
  - Sokkari Gold Mine.
  - Sadat Power Station.
  - Badr Power Station.
  - El Manzalla dredging site.
  - Gabal EL Zeit wind farm.
  - High Speed train.
  - HVDC & HIGH DAM.
  - El-Ferdan Bridge
  - Tahya Masr Bridge.
  - Zohr Oil Field.
  - Suez Canal Tunnels.
  - Rood Al-Farag Bridge.
  - Bashayer Al Khair Bridge.
  - NCIC factory petrochemicals.
  - SAMSUNG Bani Suef Factory.
  - UN Projects in Egypt.
  - KOM OMBO Solar Plant
  - Cairo Monorail Project



# Why Choose EGL ?



# Why Choose EGL ?



100% private owned



Single point of contact



Quick decision-making process



Commitment on sustainability



Stable and financially strong partner



Long-term and solid partnership

# Why Choose EGL ?

- **Expertise:** Extensive experience in managing large-scale and complex heavy lift projects.
- **Advanced Equipment:** Utilization of state-of-the-art technology and innovative methods for precision and efficiency.
- **Comprehensive Logistics:** Full-service logistics from planning through execution, ensuring seamless operations.
- **Commitment to Safety:** Adherence to the highest safety and quality standards.
- **Proven Results:** Track record of delivering projects on time and within budget.



# Regional Influence



**Eng. Medhat El Kady, CEO joins Egyptian President Abdel Fattah El-Sisi and the Royal family of Denmark at the historic Christian VII's Palace.**

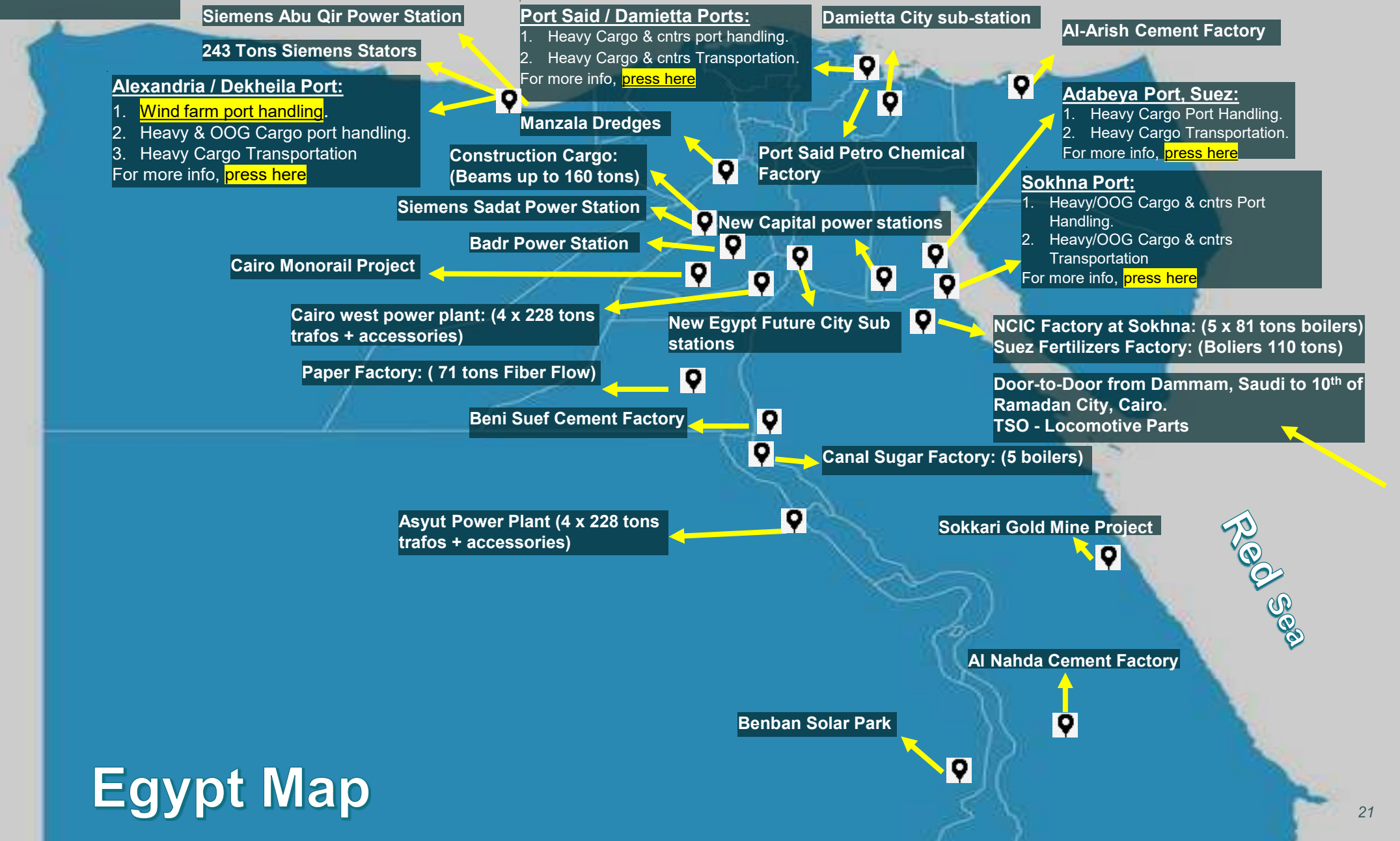
# Regional Influence



رئيس الوزراء يفتتح المرحلة الثانية من مركز كادمار اللوجيستي بالعين السخنة، بحضور الوزراء وكبار المسؤولين - يناير 2026  
Egypt's Prime Minister inaugurates Phase II of the "Kadmar Logistics Center" in Ain Sokhna, in the presence of senior ministers and government officials.

# PROJECTS

---



# Our Projects – 2025

## Power Generation (The Aswan High Dam Gets a Modern Makeover)

Siemens: 6 Transformers, Each Weighing A Staggering 189 Tons



# Our Projects – 2025

## Power Generation (HVDC)

HITACHI: 7 Transformers, Each Weighting 395 Tons



# Our Projects – 2025

## Power Generation (HVDC)

HITACHI: 12 Submarine Cable Drums, Each Weighing 56 Tons



# Our Projects

## Power Generation



### Assiut Power Station

**Transformer 244 MW  
November 2019**

<b>Weight</b>	<b>228 tons</b>
<b>Dimension</b>	<b>6.9 x 4.4 x 4.95 m</b>
<b>From</b>	<b>Dekhila Port</b>
<b>To</b>	<b>Assiut Power Station @ Assiut</b>
<b>Client</b>	<b>Runbang Damei Logistics</b>
<b>QTY</b>	<b>4</b>
<b>Route</b>	<b>850 Km</b>
<b>Trailer type</b>	<b>Modular trailer – 24 Axles</b>

# Assuit Power Station



**INFRA** Engineering Consultant  
Dr. Medhat Kamal

**إنفرا** للاستشارات الهندسية  
مهندس استشاري/مهندس مدني/مهندس كهربائي

**ASSUIT POWER STATION**  
**Mankabd Bridge**  
Document (02) – Rev. 00  
**MONITORING THE BRIDGE DUE TO**  
**THE TRANSPORT OF SPECIAL CARGO**  
ON 19<sup>th</sup> OF November 2019



PREPARED BY:

**INFRA** **إنفرا**  
ENGINEERING CONSULTANTS للاستشارات الهندسية  
**DR. Medhat Kamal**  
88 Al-Tayaran Street, Nasr City, Cairo, Egypt  
Tel: +96222621134 / +96224030279 Mobile / +9621603442612  
E-mail: [infra@infraconsultants.org](mailto:infra@infraconsultants.org)

PREPARED FOR:

EGYPTIAN GLOBAL LOGISTICS S.A.E



**INFRA** Located at: 88 El Tayaran Street, Nasr City, Cairo, Egypt / TEL/FAX, +20222621134, +202 24030279 Mobile +201603442612  
E-Mail: [infra@infraconsultants.org](mailto:infra@infraconsultants.org)

# Our Projects

## Power Generation



### SIEMENS EI-Sadat Substations

#### Transformer 175 MW – October 2020

<b>Weight</b>	<b>154ton</b>
<b>Dimension</b>	<b>8.63 x 3.4 x 4.7 m</b>
<b>From</b>	<b>Alexandria Port</b>
<b>To</b>	<b>El-Sadat Substations</b>
<b>Client</b>	<b>SIEMENS Energy</b>
<b>QTY</b>	<b>3</b>
<b>Route</b>	<b>105 Km</b>
<b>Trailer type</b>	<b>Modular trailer – 14 Axles</b>

# Our Projects

## Power Generation



### Siemens Stators (Nubaria Power Station)

#### Transformer 175 MW – Jan, 2018

<b>Weight</b>	<b>243 tons</b>
<b>Dimension</b>	<b>9 x 4.04 x 4.37 m</b>
<b>From</b>	<b>Power Station @ Nubaria</b>
<b>To</b>	<b>El-Dekhila Port</b>
<b>Client</b>	<b>Trans Masr</b>
<b>QTY</b>	<b>2</b>
<b>Route</b>	<b>200 Km</b>
<b>Trailer type</b>	<b>Modular trailer – 16 Axles</b>

# Our Projects

## Jacking & Skidding





# Our Projects – 2025

---

**Transport Sector**  
**(Siemens Mobility High Speed Train)**

**VIDEO**



# Our Projects

## Transport Sector



### Monorail Project

#### Monorail cars – September 2021

Weight	26 Ton
Dimension	13.5 x 3.4 x 4.4m
From	Alex port
To	Adminstrative capital , Elmoshir axis , Skr factory
Client	Sofi trans / Alstom
QTY	280
Trailer type	Faymonville trailers

# Our Projects

## Wind Logistics



# Our Projects

## Petroleum Sector



# Our Projects

---









# DEPOTS



## Damietta Depot Details:

---

The Damietta Depot boasts an unparalleled location on the Coastal Road, strategically connecting Alexandria, Damietta, and Port Said. This prime positioning makes it the pivotal deep-sea container export hub for routes to the **Far East** and the **U.S. East Coast**. As the sole container depot in the Damietta area, we offer expansive facilities as follows:

- **Space: 15,000 SQM**
- **Trucking Services**
- **ISO 9001 & 14001 - OHSAS 18001**



## Alexandria Depot Details:

- Located on the vibrant Alexandria-Cairo Desert Road, the Alexandria Depot offers strategic access between Egypt's principal port in Alexandria and the capital, Cairo, enhancing accessibility and operational efficiency.
- The depot is equipped with an expansive gate that ensures smooth and efficient container movements for loading and unloading processes.
- **Space: 10,000 SQM.**
- **Trucking Services.**



# Sokhna Depot Details:

- Location: El Sewedy Industrial Park, Ain Sokhna.
- 2.5 km from DPW Sokhna & HPH Sokhna
- 3KM from New Speed Train that connects Sokhna-New Capital-Cairo-Alexandria-Al Alamein.
- 30 mins to the New Administrative Capital.
- 30 mins to Suez city.
- 60 mins to Cairo.
- 25,000 m<sup>2</sup> of bonded warehouses.
- **Space: 109,000 SQM**



## Sokhna Depot Details:

---

- **Warehouses:**
  - 6,000 m2 Warehouse. (Height 13M)
  - 3,500 m2 RORO Warehouse. (Height 9M)
  - 14,000 m2 Dry Bulk & Transit Cargo Warehouse. (Height 9M)
- **Equipment:**
  - 3 Container Handlers (full and empty).
  - 6 Forklifts (3-5 Tons).
- **Total Project Capacity: 15,000 TEU with reefer plugging points.**
- 15 loading/unloading Docks + Mobile Ramp.
- **DEPOT PLAZA** (1000 m2 Business Complex ):
  - 27 Offices/Showroom.
  - 3 Meeting Rooms.
  - Banking.



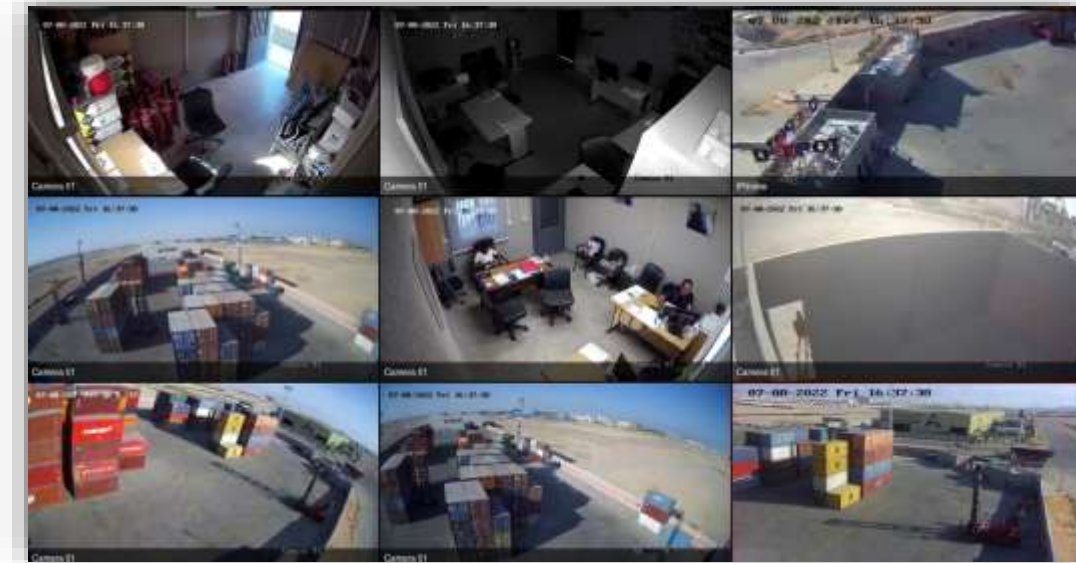
## Cairo Depot & El-Nahda Depot Details: (Under construction)

---

- Located on the vibrant Cairo-Alexandria Desert Road, the Cairo Abu Rawash & El-Nahda Depots offers strategic access between Egypt's principal port in Alexandria and the capital, Cairo, enhancing accessibility and operational efficiency.
- **Space: 37,000 SQM.**
- **Trucking Services.**

## Depots Facilities:

- CCTV Security camera and theft alarm systems.
- World class Fire Fighting System.
- Concrete Flooring capacity.
- MnR. (IIICL)
- Hydraulic elevating ramps for loading & discharging.
- In-house custom office.
- Customer service team.
- ERP System.
- Electronic Data Exchange – EDI.
- Reefer plugging points.
- Operating 24 hrs, 7 days a week.
- World-class lightning system to operate safely at night.
- Safety & Health (NEBOSH License).
- E-Invoicing & Billing.



# Safaga Logistics Park : (Under construction)

Beit Logistics chose the Golden Triangle because it represents one of Egypt's most promising development zones – strategically located between Upper Egypt and the Red Sea ports. This location provides a natural gateway connecting production centers in the south with export terminals, reducing logistics costs and transit time. The Golden Triangle Economic Zone offers a supportive investment environment, efficient coordination with local authorities, and a long-term vision for sustainable growth.

**Space: 65,000 SQM**



## Beit Logistics invests EGP 500m to develop Safaga Integrated Logistics Center



2 Min Read



Daily News Egypt

Last updated: October 22, 2025 6:52 pm



















# List of Partners



## Where we are

### Offices, Representations & Warehouses

#### EGYPT:

- Alexandria
- Cairo
- Sokhna
- Damietta
- Port Said
- Suez
- Safaga

#### TUNISIA:

- Tunis
- Sousa

#### SOUTH KOREA:

- Seoul

#### RUSSIA:

- Moscow





## Contacts

### EGE – HEADQUARTERS

25 Talaat Harb St., Alexandria

Tel.: +203 485 9990

Fax: +203 4839378

### EGE – CAIRO

12 Belal Ebn Rabah St., from Ammar Ebn Yasser El Nozha Heliopolis,  
Cairo

Tel.: +202 262 10 913 / 14

Fax: +202 262 10 915

### EGE – DAMIETTA | EGE – PORT SAID | EGE – SOKHNA

+20 57 2292230/31

+20 66 3344018-16

+20 62 3198345

Email:

[general@eglegypt.com](mailto:general@eglegypt.com)

[www.eglegypt.com](http://www.eglegypt.com)



# A NEW STEP FORWARD

